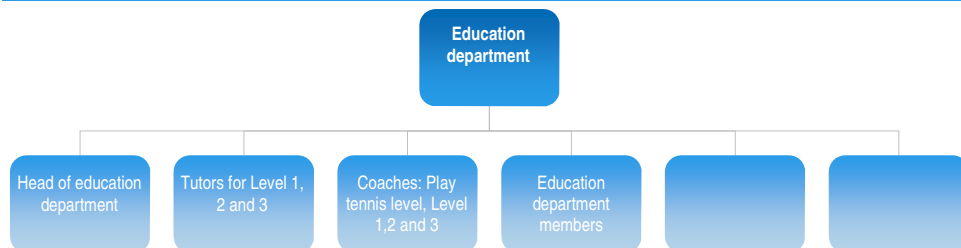


MACEDONIAN TENNIS FEDERATION

Person in charge: Goran Shevchenko
 Phone: +389 70 233243
 Email: goransev@yahoo.com



Coaches' Education Department organisational structure



Coaches' licensing scheme

Eligibility	Only the candidates nominated from the Tennis clubs aged 18+.
Benefits	Only the licenced coaches can work with national level players. Discounts in sport shops. From 2012 the coaches will receive ITF I Coach membership.
License Types	Play tennis level, Level 1, Level 2 and Level 3
License fee	From 70 to 100 euros depends of the level
Period of validity	2 years
Procedure for license renewal	Every coach should attend 1 refreshment course every 2 years
Other details	<Insert>

Framework of National Coaches' Courses and Resources Used

Title	Independency	Hours with tutor	Players' level	Standard task	Additional information	Resources (Books)	Resources (DVDs)	Resources (Web / Other)	Number of tutors
1 Play tennis	No	21	Beginners and kids	Coaching in clubs and tennis schools	Players with ITN level - from 8 to 10.3	- STI Teacher's Manual - ITF Play Tennis Manual - ITF Tennis 10s Manual	<Insert>	<Insert>	3
2 Level 1	Yes	55	Intermediate players	Coaching in clubs and (private) tennis	Players with ITN level - from 6 to 10	ITF Coaching Beginner and Intermediate Tennis Players Manual	- Coordination in tennis DTB - 12U Technique - Rules of tennis - Birth of tennis - Backboard tennis	<Insert>	3
3 Level 2	Yes	74	Up to 14U performance players	Coaching in clubs and (private) tennis	Players with ITN level - from 3 to 7	Developing Young Tennis Players	<Insert>	<Insert>	2
4 Level 3	Yes	74	Up to 18U performance players	Coaching in big clubs	Players with ITN level - from 2 to 4	- ITF Advanced Coaches Manual - Group Tennis Drills for Competitive Players - Being a Better Tennis Parent	Technique of the advanced modern strokes	<Insert>	1
5	<Select>	<Insert>	<Select>	<Select>		<Insert>	<Insert>	<Insert>	
6	<Select>	<Insert>	<Select>	<Select>	<Insert>	<Insert>	<Insert>	<Insert>	<Insert>

Tutors' Education

A programme of continuous professional development and re-accreditation is available for individuals who wish to maintain their status as coach tutor / assessor / educator and trainers of tutors

No If YES describe: <Insert>

Resources given in the training courses

Entry requirements for the training courses

National Coaches' Association

Relationship with National Association	Part of the Federation - Coaches committee
Number of members	50
Annual fees	From 25 up to 75 euros depends of the level.
Admission conditions	Only the licenced coaches can take part in Federations activities.
General activities conducted	Leading all the activities connected to coaches education.
Benefits and other information	Discounts in sport shops. From 2012 the coaches will receive ITF I Coach membership.